

Maple Leaf Square - Public Art - Bridge Lighting

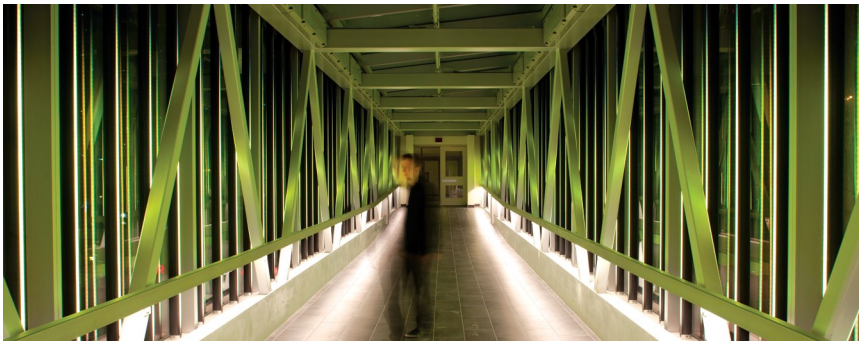
Location Toronto, Ontario
Designer/Architect United Visual Artists Ltd.
Duration February 2010 - Jun 2010

Scope - Soheil Mosun Limited was contracted to fabricate and install the lighting display and systems for "Connection", a public art illuminated foot bridge leading from the Maple Leaf Square development into the Air Canada Centre in downtown Toronto.

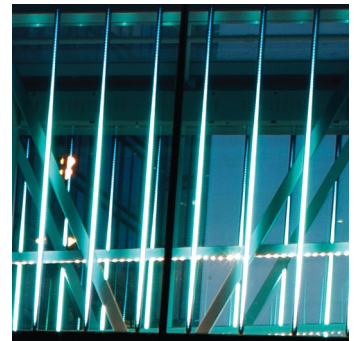
Highlights - This lighting system is a computer controlled multi-coloured, motion sensitive LED lighting system that has programmed artistic lighting patterns that respond to pedestrians walking through the bridge, creating an interactive experience. Clear tubes run from ceiling to floor holding the LED lights, while the wiring for same is completely hidden. Lighting is also installed beneath the handrails to provide a down-lighting effect.



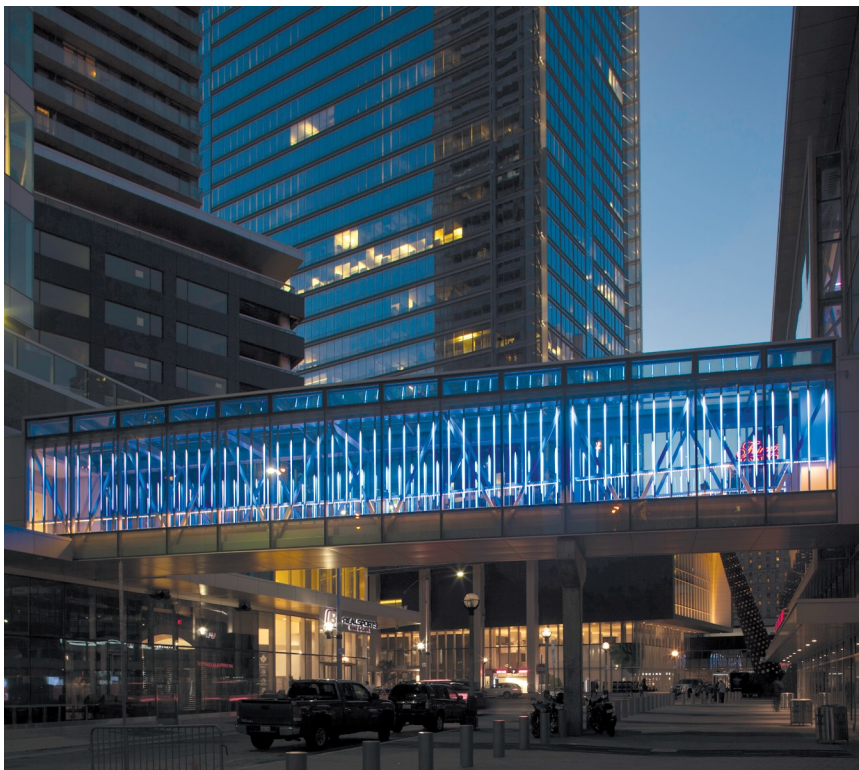
An interior view of the bridge



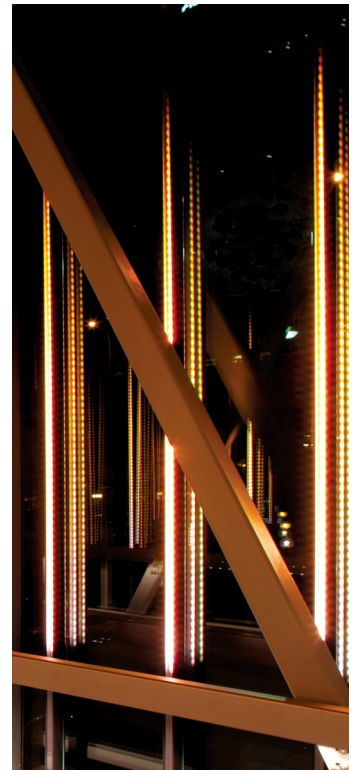
Viewing the bridge interior as lit in the evening



An exterior view of the bridge



A full exterior view of Connection. The illuminated bridge extending from Maple Leaf Square to the Air Canada Centre



Detail of the LED lights in their plexi-tube casing